

Hex Drive Drill Bit

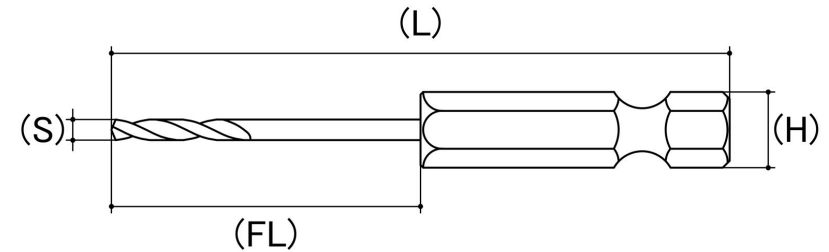
Point: 135° Split Point

System Of Measurement: Metric

Material: M2 High Speed Steel

Brand: Alpha

Suitable For: Steel, Wood, Plastic & Stainless Steel



*CAD drawings shown for graphic representation only.**

Size (S)	Drill Length (L) (mm)	Flute Length (FL) (mm)	Hex Size (H) (inches)	sku (qfind)
	Nom	Nom	Nom	
M2	60	30	1/4	12H2AC
M2.5	60	30	1/4	12H2.5AC
M3	70	38	1/4	12H3AC
M3.2	65	35	1/4	12H3.2AC
M3.5	70	40	1/4	12H3.5AC
M4	68	35	1/4	12H4AC
M4.2	72	40	1/4	12H4.2AC
M4.5	70	40	1/4	12H4.5AC
M4.8	78	45	1/4	12H4.8AC
M5	78	48	1/4	12H5AC
M5.5	78	48	1/4	12H5.5AC
M6	78	48	1/4	12H6AC
M6.5	80	50	1/4	12H6.5AC
M6.8	90	56	1/4	12H6.8AC
M7	90	60	1/4	12H7AC
M7.5	100	70	1/4	12H7.5AC

Size (S)	Drill Length (L) (mm)	Flute Length (FL) (mm)	Hex Size (H) (inches)	sku (qfind)
	Nom	Nom	Nom	
M8	100	70	1/4	12H8AC
M8.5	100	70	1/4	12H8.5AC
M9	100	70	1/4	12H9AC
M9.5	100	70	1/4	12H9.5AC
M10	100	70	1/4	12H10AC
M10.5	100	70	1/4	12H10.5AC
M11	100	70	1/4	12H11AC
M11.5	100	70	1/4	12H11.5AC
M12	100	70	1/4	12HM12AC
M12.5	100	70	1/4	12H12.5AC
M13	100	72	1/4	12H13AC

Disclaimer:

Dimensional data and technical information was obtained from publically available sources and not acquired through standard agencies. It has been completed and compiled for reference purposes only; where discrepancies are found they are subject to change without notice. Bolt & Nut Australia makes no warranties or representations regarding the accuracy and validity of the compiled information and data. Contact the relevant standard authorities for accurate and detailed information.

* CAD drawings may not reflect diameter, thread length or overall length.

© Bolt & Nut Australia Pty Ltd. All rights reserved.

Version: 18 Mar 2024